

# MOVANO RANGE

Panel Van, Chassis Cabs and Passenger Carriers.  
2018 Models Edition 1



**VAUXHALL**

# BE THE BUSINESS.

When you're choosing a commercial vehicle, you need the right tool for the job. So welcome to our range, which includes four award-winning models Corsavan, Combo, Vivaro and Movano – with over 300 variations for every kind of job, from panel

vans, chassis cabs, crew cabs and platform cabs to box vans, tippers, dropsides and passenger carriers. Even better, our reliable, fuel-efficient vehicles are supported by a dedicated network of retailers across the UK, giving you expert help





when and wherever you need it. And another thing – not only do we build more commercial vehicles than any other UK manufacturer (almost 74,000 built in the last year), we've won over 30 major awards since 2010, given by the toughest

judges in the industry. But what exactly does that mean for you? Well, it means you always know your van is made by the best in the industry, supported by professionals who care about doing a great job just as much as you.

**Now isn't that the business?**





VX\_N\_COM\_18131



VX\_MOV\_22005



vi15\_m01\_685



VX\_N\_MOV\_15051



vi15\_m01\_678



vi15\_m01\_687



VX\_MOV\_22002



vi15\_m01\_671



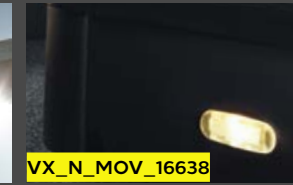
VX\_MOV\_22388



vi15\_m01\_659



vi15\_m01\_669



VX\_N\_MOV\_16638



vi15\_m01\_676



VX\_N\_COM\_18125



vi15\_m01\_668



VX\_N\_MOV\_15050



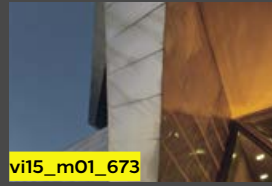
VX\_N\_COM\_18139



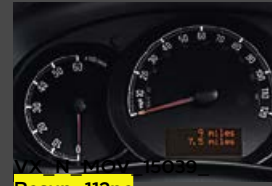
vi15\_m01\_660



VX\_CVRNG\_23643



vi15\_m01\_673



Resup\_112pc



VX\_N\_COM\_18145



vi15\_m01\_666



VX\_N\_MOV\_18373



VX\_N\_COM\_18111



VX\_N\_MOV\_15072



vi15\_m01\_679



vi15\_m01\_680



VX\_N\_MOV\_15057



vi15\_m01\_664



VX\_N\_MOV\_16195



vi15\_m01\_656



VX\_N\_MOV\_20775



vi15\_m01\_688



vi15\_m01\_661



VX\_MOV\_22001

# MOVANO. NO JOB TOO BIG.

Big. Strong. And Versatile. That's Movano. With an extensive range of models that give you more of what you need from a commercial vehicle.

Four load lengths. Three roof heights. Large load volumes. High gross vehicle weights and gross combination weights. Plus a choice of front-wheel drive, single rear-wheel drive or twin rear-wheel drive variants. Panel van, chassis cab, crew cab and platform cab variants. Plus a range of versatile passenger carriers too and factory-approved conversions.

Add to this an enhanced safety specification plus a range of efficient 2.3CDTi engines including a powerful 170PS (Euro 6) BiTurbo.

Include a driver-friendly cabin environment with plenty of useful storage, plus a host of innovative features that can really make a difference when you're out on the road.

In short, there's 'No Job Too Big' for Movano.

Most of the vehicles illustrated in this brochure include options and accessories available at extra cost. And not all of the features described are available on every model. For model and equipment availability please refer to the latest Commercial Vehicle Range Price and Specification guide, available to download from [vauxhall.co.uk](http://vauxhall.co.uk) for details.

## CONTENTS

## MOVANO

|   |    |
|---|----|
| The Movano range                                | 6  |
| Drivetrains                                     | 12 |
| Practicality                                    | 14 |
| Cabin interior                                  | 16 |
| Engines and transmissions                       | 18 |
| Movano line-up                                  | 20 |
| Panel van features                              | 22 |
| Doublecab features                              | 24 |
| Combi features                                  | 26 |
| 17-Seat Minibus features                        | 28 |
| Chassis cab, crew cab and platform cab features | 30 |
| Vauxhall conversions                            | 32 |
| Comfort   | 34 |
| Versatility                                     | 36 |
| Safety and security                             | 38 |
| Options   | 40 |
| Accessories                                     | 44 |
| Colours and trims                               | 46 |
| British Superbike Championship                  | 48 |
| Customer testimonials                           | 50 |



# MOVANO PANEL VAN AND DOUBLECAB.

With panel vans and doublecabs available in a range of heights, load lengths and drivetrains. Choice is never going to be an issue.



**Four vehicle lengths and three heights**



**GVWs from 2800 to 4500kg**



**FWD or RWD drivetrains available**







# MOVANO CHASSIS, CREW AND PLATFORM CABS.

The success of any vehicle conversion stems from the thought put in at the planning stage. All Movano chassis cabs and platform cabs have been engineered to provide a solid base for a host of conversions, with particular emphasis paid to the needs of specialist convertors.



**Up to three vehicle lengths with FWD or RWD option**



**Heavy twin rear wheel option for better traction and higher GVW's**



**3500kg platform cabs with lower kerbweights for maximum payload capacity\***

\*For an exact definition, please refer to the Glossary of Terms section within the Commercial Vehicle Range Price and Specification guide, available to download from [vauxhall.co.uk](http://vauxhall.co.uk)















# MOVANO PASSENGER CARRIERS.

From 9-seat Combi to 17-seat Minibus, Movano passenger carriers combine easy access with optimum levels of safety and comfort. A range that's guaranteed to go the distance – whoever you're carrying.



**Purpose-built passenger carriers**



**Designed for maximum safety and comfort**



**Powerful and efficient turbo-diesel engines**



Movano

MOVANO  
TURBO





# MULTI-DRIVETRAIN CAPABILITIES. SORTED.

Heavy van operators face a variety of challenges. That's why Movano offers a choice of four GVWs (2800, 3300, 3500, 4500kg) and no less than three different drivetrains. Whatever your requirement, Movano has it sorted.



**Front-wheel drive with a lower loading height and low kerbweight**



**Single rear-wheel drive for improved towing capability**



**Twin rear-wheel drive for improved traction and higher GVWs**

# ACCESS ALL AREAS.

Movano offers superb accessibility – whatever the loading conditions. Rear doors can be swung clear to 180° and locked in place at 90° – providing safe and convenient loading, even where space is restricted.

The wide opening, standard 1270mm\* sliding side-access door means a Euro pallet can be loaded sideways. While a flat load floor ensures easy access for forklifts. And with payloads from 830-2110kg Movano doesn't only look the business – it actually does the business.



**Designed to perform in every situation**



**Versatile loadspace capabilities and euro-pallet friendly**



**Impressive payloads of up to 2110kg\*\***

\*Excluding L1 models.

\*\*For an exact definition, please refer to the Glossary of Terms section within the Commercial Vehicle Range Price and Specification guide, available to download from [vauxhall.co.uk](http://vauxhall.co.uk)







# CABIN INTERIOR.

Whatever the nature of your business, the Movano cabin creates both a comfortable and versatile workspace that is completely in tune with your individual and professional needs. A well-equipped driving environment with ample storage features, Movano has it covered. And with digital radio and Bluetooth® connectivity as standard and a choice of two optional IntelliLink infotainment systems with fully integrated satellite navigation you'll also be kept well informed and entertained while on-the-road.



**Enhanced cab design for total comfort and control**



**Great place to spend the working day**



**All you need to stay in touch and entertained**







# ENGINES AND TRANSMISSIONS.

The Movano range features no less than six variants of the powerful, yet efficient, 2.3CDTi turbo diesel – 110PS and 130PS plus the following BiTurbo units: 130PS, 145PS, 163PS and 170PS. What's more, all engines now meet either V1 or Euro 6 standards through the use of BlueInjection technology\*. Better still, the high power and torque levels of our BiTurbo models make driving the Movano a pleasure – whatever the load on board.

## Powerful turbo-diesel engines

- 2.3CDTi turbo diesel units with up to 110PS and 130PS
- BiTurbo units with 130PS, 145PS, 163PS and 170PS power rating
- Six-speed manual gearbox with electronic shift indicator
- Tecshift semi-automatic transmission available
- Power-assisted steering

## Efficiency comes as standard

- BlueInjection technology for Euro 6 compatibility\*
- CO<sub>2</sub> emissions as low as 173g/km\*\*
- Start/Stop technology and ECO mode function improves fuel economy
- Outstanding durability with servicing intervals up to 25,000 miles/ two years (20,000 miles on Minibus models)

## Options include:

- Automatic locking rear differential
- Engine-driven power take-off
- Gearbox-driven power take-off
- Cruise control

\*For more information on BlueInjection technology please visit [vauxhall.co.uk/blueinjection](http://vauxhall.co.uk/blueinjection)

\*\*Combi models.





## ENGINES DATA\*

|  | Maximum power<br>PS (kW) @ rpm | Maximum torque<br>Nm (lb.ft.) @ rpm | Fuel economy mpg (litres/100km)# |                         |                         | CO <sub>2</sub> emissions<br>(g/km)# |
|--|--------------------------------|-------------------------------------|----------------------------------|-------------------------|-------------------------|--------------------------------------|
|  |                                |                                     | Urban driving                    | Extra-urban driving     | Combined figure         |                                      |
| <b>Panel Vans and Doublecabs</b>                 |                                |                                     |                                  |                         |                         |                                      |
| <b>2.3CDTi (110PS) BlueInjection</b>             | 110PS (81kW) @ 3500rpm         | 290Nm (214 lb.ft.) @ 1500rpm        | 31.4 (9.0) - 32.1 (8.8)          | 39.2 (7.2) - 40.4 (7.0) | 35.8 (7.9) - 36.7 (7.7) | 207 - 201                            |
| <b>2.3CDTi (110PS) S/S BlueInjection</b>         | 110PS (81kW) @ 3500rpm         | 290Nm (214 lb.ft.) @ 1500rpm        | 34.4 (8.2) - 34.9 (8.1)          | 39.2 (7.2) - 39.8 (7.1) | 37.2 (7.6) - 37.7 (7.5) | 197 - 194                            |
| <b>2.3CDTi (130PS) BlueInjection</b>             | 130PS (96kW) @ 3500rpm         | 320Nm (236 lb.ft.) @ 1500rpm        | 31.4 (9.0) - 32.1 (8.8)          | 39.2 (7.2) - 40.4 (7.0) | 35.8 (7.9) - 36.7 (7.7) | 207 - 201                            |
| <b>2.3CDTi BiTurbo (130PS) BlueInjection</b>     | 130PS (96kW) @ 3500rpm         | 330Nm (243 lb.ft.) @ 1500rpm        | 29.4 (9.6) - 30.4 (9.3)          | 30.7 (9.2) - 32.5 (8.7) | 30.4 (9.3) - 31.4 (9.0) | 242 - 232                            |
| <b>2.3CDTi BiTurbo (145PS) S/S BlueInjection</b> | 145PS (107kW) @ 3500rpm        | 360Nm (266 lb.ft.) @ 1500rpm        | 33.2 (8.5) - 38.2 (7.4)          | 32.8 (8.6) - 42.8 (6.6) | 32.8 (8.6) - 40.9 (6.9) | 222 - 179                            |
| <b>2.3CDTi BiTurbo (163PS) S/S BlueInjection</b> | 163PS (120kW) @ 3500rpm        | 360Nm (266 lb.ft.) @ 1500 - 2750rpm | 34.4 (8.2)                       | 34.9 (8.1)              | 34.4 (8.2)              | 212                                  |
| <b>2.3CDTi BiTurbo (170PS) S/S BlueInjection</b> | 170PS (125kW) @ 3500rpm        | 380Nm (280 lb.ft.) @ 1500rpm        | 36.7 (7.7)                       | 40.4 (7.0)              | 38.7 (7.3)              | 189                                  |
| <b>2.3CDTi BiTurbo (170PS) S/S Tecshift</b>      | 170PS (125kW) @ 3500rpm        | 380Nm (280 lb.ft.) @ 1500rpm        | 35.8 (7.7) - 36.7 (7.7)          | 40.4 (7.0) - 40.9 (6.9) | 38.7 (7.3) - 39.2 (7.2) | 189 - 187                            |
| <b>Cabs and Conversions</b>                      |                                |                                     |                                  |                         |                         |                                      |
| <b>2.3CDTi (110PS) BlueInjection</b>             | 110PS (81kW) @ 3500rpm         | 290Nm (214 lb.ft.) @ 1500rpm        | 30.4 (9.3) - 31.4 (9.0)          | 37.7 (7.5) - 39.2 (7.2) | 34.4 (8.2) - 35.8 (7.9) | 212 - 207                            |
| <b>2.3CDTi (130PS) BlueInjection</b>             | 130PS (96kW) @ 3500rpm         | 320Nm (236 lb.ft.) @ 1500rpm        | 30.4 (9.3) - 31.7 (8.9)          | 37.7 (7.5) - 39.8 (7.1) | 34.4 (8.2) - 36.2 (7.8) | 212 - 204                            |
| <b>2.3CDTi BiTurbo (130PS) BlueInjection</b>     | 130PS (96kW) @ 3500rpm         | 330Nm (243 lb.ft.) @ 1500rpm        | 29.4 (9.6) - 30.4 (9.3)          | 30.7 (9.2) - 32.5 (8.7) | 30.4 (9.3) - 31.4 (9.0) | 242 - 232                            |
| <b>2.3CDTi BiTurbo (145PS) S/S BlueInjection</b> | 145PS (107kW) @ 3500rpm        | 360Nm (266 lb.ft.) @ 1500rpm        | 33.2 (8.5) - 37.2 (7.6)          | 32.8 (8.6) - 42.2 (6.7) | 32.8 (8.6) - 40.4 (7.0) | 222 - 183                            |
| <b>2.3CDTi BiTurbo (163PS) S/S BlueInjection</b> | 163PS (120kW) @ 3500rpm        | 360Nm (266 lb.ft.) @ 1500 - 2750rpm | 33.2 (8.5) - 34.4 (8.2)          | 32.8 (8.6) - 34.9 (8.1) | 32.8 (8.6) - 34.4 (8.2) | 222 - 212                            |
| <b>2.3CDTi BiTurbo (170PS) S/S BlueInjection</b> | 170PS (125kW) @ 3500rpm        | 380Nm (280 lb.ft.) @ 1500rpm        | 35.8 (7.9) - 36.7 (7.7)          | 39.8 (7.1) - 40.4 (7.0) | 38.2 (7.4) - 38.7 (7.3) | 192- 189                             |
| <b>Combi</b>                                     |                                |                                     |                                  |                         |                         |                                      |
| <b>2.3CDTi (110PS) S/S BlueInjection</b>         | 110PS (81kW) @ 3500rpm         | 290Nm (214 lb.ft.) @ 1500rpm        | 34.9 (8.1) - 35.8 (7.9)          | 44.8 (6.3) - 45.6 (6.2) | 40.9 (6.9) - 41.5 (6.8) | 179 - 176                            |
| <b>2.3CDTi BiTurbo (145PS) S/S BlueInjection</b> | 145PS (107kW) @ 3500rpm        | 360Nm (266 lb.ft.) @ 1500rpm        | 37.7 (7.5)                       | 46.3 (6.1)              | 42.8 (6.6)              | 173                                  |
| <b>2.3CDTi BiTurbo (170PS) S/S BlueInjection</b> | 170PS (125kW) @ 3500rpm        | 380Nm (280 lb.ft.) @ 1500rpm        | 37.7 (7.5)                       | 46.3 (6.1)              | 42.8 (6.6)              | 173                                  |

\*For more detailed technical data, please refer to the Commercial Vehicle Range Price and Specification guide, available to download from [vauxhall.co.uk](http://vauxhall.co.uk)

#Fuel consumption information is official government environmental data, tested in accordance with the relevant EU directive. Official EU-regulated test data is provided for comparison purposes and actual performance will depend on driving style, road conditions and other non-technical factors. S/S = Start/Stop.

# MOVANO LINE-UP.

Whatever business you're in, the Movano presents a complete range of models with a comprehensive line up of drivetrain and configuration options. For example, we offer single rear-wheel drive or twin rear-wheel drive versions. That's on top of our more familiar front-wheel drive models. Depending on the variant you choose there are four load lengths. And four GVWs – between 2.8 and 4.5 tonnes.

To help you choose the Movano that's just right for your business, we use a customer-friendly naming scheme. For example an L3 H2 R3500 HD model can be easily identified as shown below.

**L = Load length**

Four lengths are available ranging from L1-L4

**Layout**

F = Front wheel drive  
R = Rear wheel drive

**HD = Heavy duty**

Designation used when twin rear wheels are fitted

L3

H2

R

3500

HD

**H = Height**

Three roof heights are available H1-H3

**Gross Vehicle Weight**

Four GVWs are available  
2800 / 3300 / 3500 / 4500

Please refer to the Commercial Vehicle Range Price and Specification guide, available to download from [vauxhall.co.uk](http://vauxhall.co.uk) for model availability.



Vehicle illustrated features 270° opening unglazed rear doors, offside sliding side-access door and Ambient Blue two-coat metallic paint all optional at extra cost.



## MOVANO LINE-UP

### Panel Van – FWD models

VX\_N\_MOV\_15331



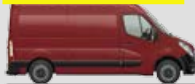
L1 H1 F2800/F3300/F3500

VX\_N\_MOV\_15330



L1 H2 F2800/F3300/F3500

VX\_N\_MOV\_15329



L2 H2 F3300/F3500

VX\_N\_MOV\_15328



L2 H3 F3500

VX\_N\_MOV\_15327



L3 H2 F3500

VX\_N\_MOV\_15325



L3 H3 F3500

### RWD models

VX\_N\_MOV\_15326



L3 H2 R3500

VX\_N\_MOV\_15314



L3 H2 R3500 HD/R4500 HD

VX\_MOV\_22016



L4 H2 R3500

VX\_N\_MOV\_15323



L4 H2 R3500 HD/R4500 HD

VX\_N\_MOV\_15324



L3 H3 R3500

VX\_N\_MOV\_15315



L3 H3 R3500 HD/R4500 HD

VX\_MOV\_22017



L4 H3 R3500

VX\_N\_MOV\_15322



L4 H3 R3500 HD/R4500 HD

### Doublecab – FWD models

VX\_N\_MOV\_15319



L2 H2 F3500

VX\_N\_MOV\_15318



L3 H2 F3500

### RWD model

VX\_N\_MOV\_15332



L3 H2 R3500

### Chassis Cab

VX\_MOV\_23949



L2 H1 F3500/R3500  
L2 H1 R3500 HD/4500 HD  
L3 H1 F3500/R3500  
L3 H1 R3500 HD/R4500 HD  
L4 H1 R3500 HD/R4500 HD

### Crew Cab

VX\_MOV\_23950



L2 H1 F3500/R3500  
L3 H1 F3500/R3500  
L3 H1 R3500 HD/R4500 HD  
L4 H1 R3500 HD/R4500 HD

### Platform Cab

VX\_MOV\_23951



L2 H1 F3500  
L2 H2 F3500  
L3 H1 F3500  
L3 H2 F3500

### Combi

VX\_N\_MOV\_16641



L1 H1 F3300: 9-seat model

### Combi

VX\_N\_MOV\_16642



L2 H2 F3500: 9-seat model

### Minibus

VX\_MOV\_23952



L3 H2 F3960: 17-seat model



Vehicle illustrated features 270° opening unglazed rear doors, offside sliding side-access door, full-diameter wheel trims and Poppy Red brilliant paint all optional at extra cost.



# PANEL VAN.

Four lengths, three heights and four GVW's. Whatever your transport needs Movano meets them, head-on.

## Access and loadspace features include:

- Easy access nearside sliding side-access door
- Full-height steel bulkhead
- Unglazed rear doors
- Floor-mounted, load-securing eyes
- Underfloor spare wheel
- Up to 17.0cu.m (600cu.ft.) max. loadspace volume
- Up to 4383mm (172.6 in.) loadspace length
- Up to 2110kg payload capacity\*

## PANEL VAN

| Loadspace dimensions                 | mm          | inches        |
|--------------------------------------|-------------|---------------|
| Maximum load lengths (L1 - L4)       | 2583 - 4383 | 101.7 - 172.6 |
| Maximum load area width              | 1765        | 69.5          |
| Width between wheel arches           | 1380        | 54.3          |
| Width between wheel arches HD Models | 1080        | 42.5          |
| Maximum heights (H1 - H3)            | 1700 - 2144 | 66.9 - 84.4   |
| Rear and side load door(s)           | mm          | inches        |
| Side-access door(s) widths           | 1050 - 1270 | 41.3 - 50.0   |
| Side-access door(s) heights          | 1581 - 1780 | 62.2 - 70.1   |
| Rear door aperture width             | 1577        | 62.1          |
| Rear door aperture heights           | 1627 - 1820 | 64.0 - 71.7   |
| Loadspace volumes                    | cu.m        | cu.ft.        |
| VDA method                           | 7.0-14.1    | 247-498       |
| Maximum                              | 7.8-17.0    | 275-600       |
| Weights                              | GVWs kg     | Payloads kg   |
| Panel Vans                           | 2800 - 4500 | 830 - 2110    |

Not all features and options are available on every model. Please refer to the equipment section within the Commercial Vehicle Range Price and Specification guide, available to download from [vauxhall.co.uk](http://vauxhall.co.uk)

OP\_MOV\_22732



Vehicle illustrated features resin-coated plywood floor, bulkhead window, glazed rear doors and Poppy Red brilliant paint all optional at extra cost.

**Versatile rear doors.** Movano rear doors can be swung clear to 180° and locked in place at 90° – providing safe and convenient loading, even where space is restricted. Movano can also be specified with 270° opening rear doors with or without windows.

\*For an exact definition, please refer to the Glossary of Terms section within the Commercial Vehicle Range Price and Specification guide, available to download from [vauxhall.co.uk](http://vauxhall.co.uk)



VX\_N\_MOV\_15047

**Room for all the crew.** The Doublecab features four individually contoured rear seats with lap and diagonal seatbelts. Rear storage includes a full-length tray under the seat cushion, plus optional overhead and side net pockets (illustrated above).

\*Not all features and options are available on every model.

\*\*For an exact definition, please refer to the Glossary of Terms section within the Commercial Vehicle Range Price and Specification guide, available to download from [vauxhall.co.uk](http://vauxhall.co.uk)

# DOUBLECAB.

With capacity for up to seven people, a 3.5 tonne GVW and a maximum payload of up to 1305kg, the Movano Doublecab is designed to take your crew and equipment exactly where they need to be.

## Features include:\*

- Room for up to six passengers
- Up to 9.0cu.m (318cu.ft.) max. loadspace volume
- Up to 2640mm (103.9 in.) loadspace length
- Up to 1305kg payload capacity\*\*

## DOUBLECAB

| Loadspace dimensions                               | mm          | inches       |
|--|-------------|--------------|
| Maximum load lengths - behind rear seats (L2 - L3) | 1990 - 2640 | 78.3 - 103.9 |
| Maximum load lengths - at load floor (L2 - L3)     | 2175 - 2825 | 85.6 - 112.2 |
| Maximum load area width                            | 1765        | 69.5         |
| Width between wheel arches                         | 1380        | 54.3         |
| Maximum heights                                    | 1798 - 1894 | 70.8 - 74.6  |
| Rear and side load door(s)                         | mm          | inches       |
| Side-access door(s) widths                         | 1270        | 50.0         |
| Side-access door(s) heights                        | 1780        | 70.1         |
| Rear door aperture width                           | 1577        | 62.1         |
| Rear door aperture heights                         | 1820        | 71.7         |
| Loadspace volumes                                  | cu.m        | cu.ft.       |
| Maximum  | 6.9 - 9.0   | 244 - 318    |
| Weights  | GVWs kg     | Payloads kg  |
| Doublecab  | 3500        | 957 - 1305   |

Please refer to the equipment section within the Commercial Vehicle Range Price and Specification guide, available to download from [vauxhall.co.uk](http://vauxhall.co.uk)

VX\_MOV\_22087





Vehicle illustrated features overhead and side net pockets, glazed rear doors, full-diameter wheel trims, front fog lights and Poppy Red brilliant paint all optional at extra cost.



**1. Comfortable seating for nine.** The 9-seat Combi provides comfortable and accessible seating for all occupants.

**2. Removable bench seat.** The rear bench seats include floor-mounted fixing rails so they can be removed without the need for special tools, freeing up additional load area space quickly and easily if required.

**3. Rear step.** An optional integrated rear step is available to improve rear door access.

# COMBI.

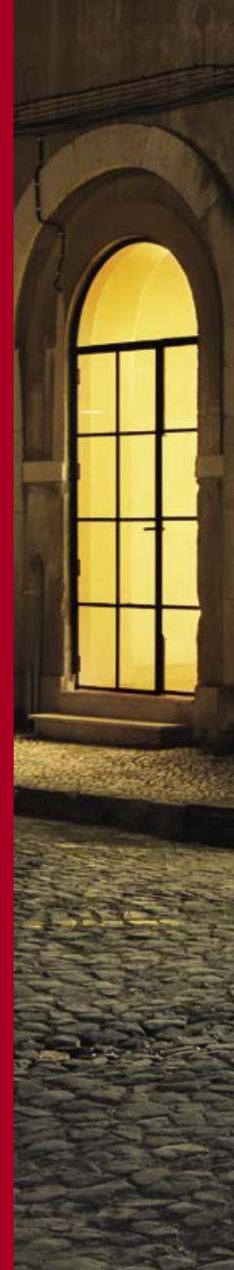
Available in two lengths and heights, the Movano 9-seat Combi provides the perfect mix of passenger carrying ability and load carrying potential. Standard features include a dual front passengers' bench seat, second- and third-row rear bench seats for three passengers and single sliding door on the nearside.

## Access and loadspace features include:\*

- Dual front passenger bench seat
- Two rear bench seats for six passengers
- Removable function for second- and third-row bench seats
- Nine inertia-reel lap and diagonal seatbelts
- Load restraint lashing eyes for load area
- Selective door-locking with three-button key
- Electronic Stability Programme-plus
- Tyre pressure monitoring system

L2 H2 vehicle illustrated right features Halo Silver two-coat metallic paint, optional at extra cost.

\*Not all features and options are available on every model. Please refer to the equipment section within the Commercial Vehicle Range Price and Specification guide, available to download from [vauxhall.co.uk](http://vauxhall.co.uk)









**1. 17-seater comfort.** Light and spacious, Movano Minibus offers comfortable transport for 17, with inertia-reel lap and diagonal seatbelts for every occupant.

**2. Overhead storage.** Movano Minibus features overhead storage on both sides of the passenger compartment useful for coats and light luggage.

**3. Walkway illumination.** Individual lighting to each seat row helps guide passengers when it's dark.

# 17-SEAT MINIBUS.

The purpose-built Movano Minibus provides generous accommodation for 17 people. The last two rows of seats can also be specified with optional floor-mounted fixing rails, freeing up additional load area space quickly without the need for special tools.

## Access and loadspace features include:\*

- All seats and mountings tested to M1 standards
- Dual front passenger bench seat
- 14-individual rear passenger seats
- Individual saloon lighting for all rear seats
- Illuminated rear passenger walkway
- Overhead storage and coat racks in rear passenger area
- Retracting side step
- Easy-access wide-opening sliding side door
- Selective door-locking with three-button key
- Electronic Stability Programme-plus
- High beam assist
- Lane departure warning
- Front fog lights
- Multi-function trip computer

\*Not all features and options are available on every model. Please refer to the equipment section within the Commercial Vehicle Range Price and Specification guide, available to download from [vauxhall.co.uk](http://vauxhall.co.uk)







Vehicle illustrated features Halo Silver two-coat metallic paint, optional at extra cost.

# MOVANO FLEXIBILITY.

Chassis cab, crew cab and platform cab models provide the perfect base for one of three factory-built conversions – tipper, dropside, box van or our extensive range of approved conversions.

## CHASSIS CAB.

Movano chassis cab models feature rugged box section chassis rails, featuring wide top sections with built-in mounting points. The bolted rear under-run bar provides additional in-built safety, as well as ample margins for additional bodywork while retaining outstanding payloads.

- Three load lengths (L2, L3, L4)
- Two GVWs (3500kg or 4500kg)
- Front-wheel drive, rear-wheel drive or heavy-duty twin rear-wheel drive

## CREW CAB.

Providing the same choice of body configurations and GVWs as the chassis cab but extra accommodation for four additional crew members.

- Three load lengths (L2, L3, L4)
- Two GVWs (3500kg or 4500kg)
- Front-wheel drive, rear-wheel drive or heavy-duty twin rear-wheel drive

## PLATFORM CAB.

Ideal for those conversions requiring a low floor and walk-through access from the cab. The interface panel makes for easy integration of the cab with the conversion body, while an extended-length wiring loom is available to power the rear lights or extended conversions.

- Two load lengths (L2, L3)
- One GVW (3500kg)
- Two roof heights (H1, H2)
- Front-wheel drive



### 1. Practical and safety-conscious.

Whether you're travelling one-up or seven-up, crew cab pays serious attention to the needs of driver and crew. Fabrics are hard-wearing and easy to clean, comfort levels high and safety features impressive; in fact everything you'd expect of this award-winning model.

**2. Underseat storage.** Storage is never an issue with our out-of-sight, out-of-mind underseat storage facility.

Log on to [vauxhall.co.uk/conversions](http://vauxhall.co.uk/conversions) for more information.







Vehicle illustrated features Halo Silver two-coat metallic paint, optional at extra cost.

VX\_N\_MOV\_16188

# VAUXHALL CONVERSIONS.

With chassis cabs, crew cabs, platform cabs and purpose-built factory conversions available, Movano is big on choice. It's incredibly versatile, too, with front-wheel drive, rear-wheel drive and heavy-duty twin rear-wheel drive options available. Of course, all Movano factory conversions carry the full Vauxhall three-year/100,000 mile warranty on both the chassis and the conversion.

There's a range of specialist, Vauxhall approved conversions available across our commercial vehicle range too. From Combo through to the Vivaro and Movano ranges, there's an enormous breadth of choice to suit your exact requirements. So, whichever model you choose, you can be confident your Vauxhall Commercial Vehicle will always be 100% fit for purpose.

Ask your Vauxhall CV Retailer for a copy of the Vauxhall Factory and Approved Conversions Brochure or log on to [vauxhall.co.uk/conversions](http://vauxhall.co.uk/conversions) for more details.



Models illustrated left to right: L4 H1 R3500 RWD HD box van with optional wind deflector, L4 H1 3500 RWD HD crew cab dropside and L2 H1 R3500 RWD HD tipper.





# COMFORT.

Movano raises the bar on cabin design, creating a practical, well-equipped driver environment. Outstanding ergonomics – allied to high levels of equipment, maximum ease of access and a superb driving position – come together to create the right travelling and working experience, whatever job you're undertaking.

## **Movano range features:**

- Bluetooth® connectivity and USB for smartphones and MP3 players
- Digital radio
- Steering column-mounted audio and telephone controls
- Aux-in socket
- Availability of two optional fully integrated satellite navigation systems

**Movano interior.** There's no problem in finding the ideal driving position in a Movano with a height-adjustable steering wheel and a driver's seat that's adjustable for height, reach and rake. You can even specify air conditioning as an extra-cost option that features a chilled glovebox facility. The well-designed cabin also features clear and concise instrumentation and with infotainment that includes both digital radio, Bluetooth® connectivity and an optional sat nav system, it's one workspace that you won't mind spending time in.



Model illustrated features  
Convenience Pack and bulkhead  
window optional at extra cost.





VX\_MOV\_25675



VX\_N\_MOV\_15042



VX\_MOV\_25673



VX\_N\_MOV\_15095

- 1. Improved instruments.** Clear and easier to read in a simple, no-nonsense binnacle.
- 2. Drinks holders.** Two fascia-mounted drinks holders are standard on all models.
- 3. Bluetooth® connectivity.** Virtually universal in compatibility and enables hands-free mobile phone communication.
- 4. Flat-folding middle seat back.** Flat work surface with two drinks holders and storage tray.

# VERSATILITY.

Movano's cabin is equipped with plenty of large – and useful – storage facilities as standard and extensive fascia storage.

But for some operators, we recognise that won't be enough! The Convenience Pack option helps transform the cab into a state-of-the-art, full-on mobile office.

## Movano range features:

- Twin overhead storage shelves
- 11-litre passenger glovebox
- Large door pockets
- Coin and ticket holders
- Facia-mounted cup holders

**Convenience Pack.** This versatile optional extra features a retractable fascia document clip, multi-function bench seat with folding seat back on centre passenger seat including swivelling work tray and underseat storage.



Model illustrated features Convenience Pack, Air conditioning and cruise control, optional at extra cost.





**1. Facia storage.** All Movano models feature a semi-covered tray on top of the fascia.

**2. Overhead storage.** There's a handy shelf above both driver and passengers.

**3. Large door pockets.** A two-litre water bottle or other bulky items can be accommodated.

**4. Underseat storage.** Convenience Pack also includes a large enclosed storage space accessed via the folding seat cushions.

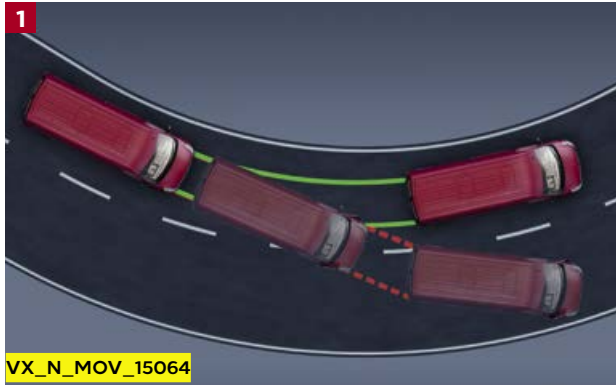
# SAFETY AND SECURITY.



VX\_MOV\_25674



Whatever the working environment, Movano puts driver and passenger protection and vehicle security at the top of its agenda with the very latest safety and security systems available.



**1. ESP-plus with TCS.** Standard on all Movanos, ESP-plus reduces throttle response and varies the braking force to each of the wheels when a driving imbalance is detected, keeping the vehicle moving in the right direction. Traction control senses a lack of traction during acceleration and reacts to ensure maximum contact between the road surface and the tyres. The system also features the additional benefits of hill start assist and trailer stability programme\*.

**2. Static cornering lights\*\*.** Depending on the steering angle and vehicle speed when cornering, an additional light illuminates the corner of the road when turning.

**High beam assist†.** Automatically switches from high to low beam as it detects oncoming or proceeding vehicles.

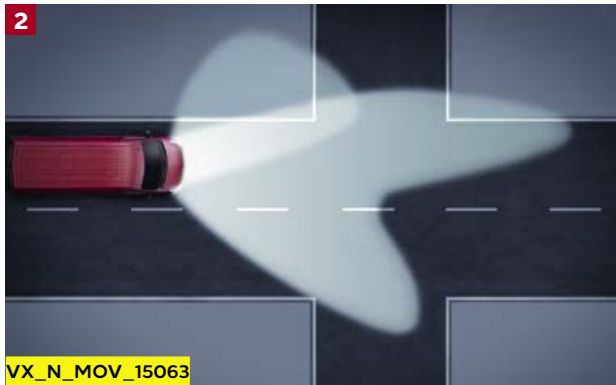
**Lane departure warning†.** An audible warning is sounded if you unintentionally leave your lane.

**Driver and passenger restraint systems.** A driver's airbag is standard, with front passengers' optional at extra cost.

**Three-button key operation.** Panel van models employ remote selective door locking that enables both front doors, the rear and side loading doors, or all doors to be locked or unlocked independently.

**Under-floor spare wheel.** Unlike spare wheels that are accessed or stored in the load area, Movano's under-floor stowage system means that you don't need to unload the van to get to the spare.

And, acting as an additional security measure, the spare wheel can only be winched when the rear door has been unlocked and opened.



\*When the optional tow bar is also specified. \*\*Static cornering lights are part of the optional Lighting Pack.

†Available as part of the Advanced Safety Assist Pack.

# MOVANO\* OPTIONS.

## Loadspace

Movano panel vans' excellent loadspace credentials – allied to maximum accessibility – are assisted by a wider choice of cargo area options than ever before. These options allow you to create the loadspace that's just right for your business. Here's just a selection of the options available.



### 1. Full-height load area panelling and wheel arch protection.

Plywood panels provide maximum loadspace protection.

### 2. Load area protective panels.

Half-height load trim panels help safeguard the side walls from everyday wear and tear. Standard on RWD models.

**3. Protective floor.** A resin-coated plywood floor protects the load floor from damage.

\*Optional at extra cost. Please refer to the latest Commercial Vehicle Range Price and Specification guide available to download at [vauxhall.co.uk](http://vauxhall.co.uk) for availability by model.



## Interior

Creating an optimal working environment couldn't be easier with Movano. With a variety of seating options, a host of additional comfort features and a great infotainment system including satellite navigation, Movano has it all to offer – whatever job you're undertaking. Here are just some of the highlights.



**4. Air-suspended driver's seat.** The eight-way adjustable, air-suspended driver's seat features an armrest and adjustable suspension sensitivity for maximum comfort in all conditions.

**'Comfort' seats.** Driver's seat features height-adjustment, adjustable lumbar support and armrest. A single 'Comfort' front passenger seat is also available (not illustrated).

**5. Air conditioning and electronic climate control (ECC).** The air-con option comes complete with pollen filter and a chilled glovebox. Aids demisting and provides a fresher travelling environment all year round. Move up to ECC (illustrated) and as well as an air conditioned cab you'll also be able to more precisely control your environment through thermostatically-controlled temperature adjustment.

The air conditioning in vehicles with N1, N2 or M2 type approval relies upon fluorinated greenhouse gases (R134a) for its functioning. The front system contains a quantity of overall 580g of R134a, which corresponds to a CO<sub>2</sub> equivalent of 0.83 tons. The front and rear system in versions with up to 9-seats contains a quantity of overall 1,100g of R134a, which corresponds to a CO<sub>2</sub> equivalent of 1.57 tons. The front and rear system in versions with more than 16-seats contains a quantity of overall 1,700g of R134a, which corresponds to a CO<sub>2</sub> equivalent of 2.43 tons. The global warming potential amounts to 1430. Information acc. to R(EU) No. 517/2014.

**6. NAVI 50 IntelliLink.** Digital radio/stereo radio/aux-in socket/Bluetooth® hands-free phone connectivity and audio streaming/USB facility with a 7-inch colour touchscreen, two 20-watt speakers and dynamic satellite navigation system with western European map coverage.

**NAVI 80 IntelliLink.** The intuitive, top-of-the-range system with 3-D viewing, integrated voice control, USB video player/photo reader and TomTom LIVE services till 2020 without charge for real-time traffic information. The separate overhead 7-inch display also shows the view for the optional rear view camera (not illustrated).

## Exterior

Enhanced security. Higher safety levels. A little more protection. Or just the added practicality of a tow bar. Whatever your individual need, Movano options have it covered. We also offer a range of mechanical options that can seriously add to Movano's performance as a working vehicle.



**Engine-driven power take-off.** Movano models can be specified with an engine-driven PTO. This can be used to drive a fridge compressor or other light applications.

**Gearbox-driven power take-off.** RWD versions of Movano can be supplied with a gearbox-driven PTO. Particularly useful for companies operating heavy-duty ancillary equipment.



### **Rear parking distance sensors.**

Optional rear parking distance sensors provide an audible warning to help prevent accidental damage when reversing.

**Fixed tow bar.** As the name suggests, the unit and ball are permanently fixed – and, once fitted, cannot be readily removed. 13-pin electrics are also included.

**Automatic locking rear differential (ALRD).** To assist driving in rough or slippery conditions ALRD is optional at extra cost on RWD models.

**Alarm system.** The optional anti-theft alarm protects the engine compartment and uses sensors to guard both the cab and load area.



**Front fog lights.** Improved forward vision and reduced glare in foggy weather conditions.

**Airbag options.** A driver's airbag is standard across the range. An optional front passengers' airbag with deactivation switch is also available.

**Pneumatic suspension.** For easier loading and unloading, and improved ride comfort.

**Increased engine speed.** Movano is available with an increased engine idle speed option. This enables power to be supplied to ancillary equipment without affecting the battery charge. An essential option for vehicle converters.



# MOVANO OPTION PACKS\*

Movano option packs provide a 'bundle' of features at a highly attractive price, allowing you to tailor your equipment package to suit the individual demands of your business.



## Convenience Pack

- Retractable document clip in fascia
- 'Comfort' driver's seat
- Bulkhead soundproofing
- Multi-function office bench seat with folding seat back on centre passenger seat including swivelling work tray
- Storage under bench seat accessed by folding seat cushions
- 'One-touch down' facility for driver's electrically operated window



## Advanced Safety Assist Pack\*\*

- Lane departure warning
- High beam assist
- Multi-function trip computer
- Front fog lights



## Construction Pack (RWD models)

- Tow bar with 13-pin electrics
- Automatic locking rear differential
- Air-suspended driver's seat



## Lighting Pack\*\*

- Automatic lighting control
- Rain-sensitive windscreen wipers
- Front fog lights
- Static cornering lights
- Door-to-door illumination

\*Optional at extra cost. Please refer to the latest Commercial Vehicle Range Price and Specification guide available to download at [vauxhall.co.uk](http://vauxhall.co.uk) for availability by model.

\*\*Standard on Minibus and 4500 models.

# MOVANO ACCESSORIES.

Genuine Vauxhall Accessories are the right choice for your Movano. The list below is just a small sample of the range available. For a full list, please refer to the latest Movano Price Guide available from [vauxhall.co.uk](http://vauxhall.co.uk), or check out our website at: [vauxhall.co.uk/accessories](http://vauxhall.co.uk/accessories)

## Other accessories include:

### Safety

- Safety pack
- MetaSystem rear parking distance sensors
- First aid kit and warning triangle
- Hi-visibility vest

### Practical

- MetaSystem alarm
- Spare bulb kit
- Fuel can
- Stretch tow rope
- Jump leads
- Fire extinguisher (1kg or 2kg)
- Fire extinguisher bracket (1kg or 2kg)
- Tyre inflation kit

### Security

- Steering wheel security bar

### Protection

- Seat covers

### Audio accessories

- Portable CD storage bag or box
- Sunvisor CD storage

### Towing

- Flange tow bar
- Towing electrics (7-pin or 13-pin)
- Towing electrical adaptors (7/13-pin or 13/7-pin or 12S adaptor)



VX\_N\_MOV\_15070

Models illustrated feature Glazing Pack, optional at extra cost.



VX\_MOV\_22027

**1. Roof base carrier.** City crash test approved, the transverse-fitting aluminium roof bars provide a solid platform for a range of roof carriers. They feature an oval-shaped profile and attach directly to mounting points on the roof itself using a secure, T-track connector. Up to six bars can be fitted per vehicle and the maximum load per bar is 50kg. Maximum load per roof is 200kg (including the weight of all fitted bars).

**2. Steel ladder.** Steel-constructed but with a smart, aluminium-look finish, the rear ladder is firmly affixed to the rear door of the vehicle.





**3. Roof rack tray.** With dimensions tailored to the individual vehicle, the aluminium roof rack tray offers a maximum load capacity of 200kg.

**4. Walkway for roof rack tray.** Made from lightweight but sturdy perforated aluminium and for use with the roof rack tray, the walkway enhances access to the roof.

**5. Trailer hook.** Particularly suited to heavier loads, the trailer hook is finished in an anti-corrosive epoxy powder treatment.

**6. Rear window protection grilles.** Constructed from 1mm thick epoxy coated steel, the rear window protection grilles help avoid theft while retaining rearward visibility.

**7. Splash guards.** Movano's smart, grey, moulded splash guards are specifically designed to protect the lower bodywork from stone chips, grit and other road material.

**8. Carpet mats.** Constructed from smart yet hard-wearing textile – and available in dark grey – the one-piece Movano-branded carpet mat features fittings to prevent slippage in use.

# MOVANO COLOURS AND TRIMS.

Movano's business-like appearance is exemplified by the smart choice of colours available. The cloth or vinyl trims have been chosen as much for their hard-wearing properties as they have for their visual appeal.

Arctic White – solid



VX\_N\_MOV\_17551

Signal Blue – solid



VX\_N\_MOV\_17552

North Sea Blue – solid



VX\_N\_MOV\_17555

Saffron Yellow – solid



VX\_N\_MOV\_17557

Ink Blue – solid



VX\_N\_MOV\_17558

Halo Silver – two-coat metallic



VX\_N\_MOV\_17559

Pearl Black – two-coat metallic



VX\_N\_MOV\_19373

Ambient Blue – two-coat metallic



VX\_N\_MOV\_17560

Mandarin Orange – brilliant



VX\_N\_MOV\_17553

Poppy Red – brilliant



VX\_N\_MOV\_17556

Please refer to the latest Movano Price and Specification Guide available to download at [vauxhall.co.uk](http://vauxhall.co.uk) for details of colour availability by model and prices.

Due to the limitations of the printing process, the colours reproduced may vary from the actual colour. As a result they should be used as a guide only.

Please note: Certain alternative colours are available for special order on Movano. Restrictions apply so please consult your Commercial Vehicle retailer for more details. Only the cab is painted on factory conversion models. The Dropside and Tipper models feature an aluminium finish and the Box Body is finished in white.





### Grey Pulse cloth

Hard-wearing Grey Pulse cloth trim is fitted as standard across the range.



### Grey vinyl\*

Alternatively, grey vinyl trim can be specified at extra cost for customers requiring a more workmanlike, wipe-clean option.

## EXTERIOR COLOURS

| Trim                     | Grey Pulse cloth | Grey vinyl* |
|--------------------------|------------------|-------------|
| <b>Solid</b>             |                  |             |
| Arctic White             | •                | •           |
| Signal Blue              | •                | •           |
| North Sea Blue           | •                | •           |
| Saffron Yellow           | •                | •           |
| Ink Blue                 | •                | •           |
| <b>Brilliant</b>         |                  |             |
| Poppy Red                | •                | •           |
| Mandarin Orange          | •                | •           |
| <b>Two-coat metallic</b> |                  |             |
| Halo Silver              | •                | •           |
| Ambient Blue             | •                | •           |
| Pearl Black              | •                | •           |

• = Available

\*Grey vinyl seat trim is optional at extra cost.

# BRITISH SUPERBIKE CHAMPIONSHIP

To celebrate Vauxhall's sponsorship of the 2017 MCE British Superbike Championship two new concept vans have been specially-designed. The Vivaro and Movano Race Van Concepts will be displayed throughout the 2017 BSB season.

## **Vivaro Race Van Concept**

The Vivaro Race Van Concept is designed to function as a mobile workshop supporting any number of trade professionals. On a non-working day it can be easily transformed to support track-day or even off-road motorcycling. The cargo layout is well-considered and flexible with the offside featuring a combination of fixed racking and removable lightweight mobile workstations. The nearside features a folding shelf system to store additional kit. There are also a number of built-in comfort features including a fold-down bench seat on the bulkhead, microwave, refrigerator and a 32-inch Smart TV.

## **Movano Race Van Concept**

The Movano Race Van Concept was designed with the purpose of providing support and transport for the smaller motorcycle racing teams.

The cargo layout on the Movano features a permanent approach with the offside featuring a combination of fixed workbench and racking. The toolboxes within the workbench can also be removed. The nearside features the same folding shelf system. In addition, the Movano Race Van Concept features a retractable awning that provides an enclosed all-weather workspace adjacent to the van. A number of built-in comfort features include a fold-down bench seat on the bulkhead, microwave, refrigerator, wash basin and a 40-inch Smart TV.



VX\_CVRNG\_26777





# VAUXHALL COMMERCIAL VEHICLES. BE THE BUSINESS.



VX\_N\_MOV\_15980

**Russell Lelliot,**  
Managing Director,  
RSL Transport said...

‘We’ve been running Movanos for years. Our two new Movanos save around 4mpg when full, compared to the old models. Which over almost 3,000 miles per week per van, is a big saving!’

Whatever your load, Vauxhall Commercial Vehicles are designed to help you deliver a top quality job. Our award-winning line-up can actively enhance the operating efficiency of your business by delivering outstanding load-carrying potential, low running costs and day-long driver comfort. Whichever Vauxhall Commercial Vehicle you choose,

you can also rest assured that Vauxhall's nationwide network of retailers will go the extra mile to meet all your servicing and maintenance needs. But why take our word for it? Vauxhall's commitment to keeping your business moving is recognised by van operators of all sizes across the length and breadth of the country...



VX\_COV\_16060

**Mike Sinclair, Senior Property Partner, Aberdeen Considine said...**

'Our fleet of 23 Corsavan Sportives is a reflection on our business, reinforcing our professional image. Not only that, we've found them economical, reliable and fun to drive.'



VX\_N\_COM\_19409

**Jonathan Mounsey, Managing Director, JD Mounsey Ltd, said...**

'The plan is to become a 100 per cent Vauxhall Fleet. There's no better combination of residual value, low running costs and reliability. They do the job.'

**Richard Fox, Managing Director of ITE Projects said...**

'We rely totally on our vehicles to ensure we are available 24/7 to service our customers' critical requirements. The Combo van is proving to be as reliable as we are.'



VX\_VIV\_15654



# Trust Vauxhall

## Fleet Customer Services

Our dedicated support services for fleet managers include factory demonstrators and information on whole life costs, company car and van taxation and finance. For further information please call **0330 587 8222**.

## For more information...

For a brochure on any Vauxhall model (up to a maximum of three per caller) or location of your nearest retailer, call **0345 600 1500**.

Alternatively, details can be found on our website at: [vauxhall.co.uk/vans](http://vauxhall.co.uk/vans)

## To Find a Commercial Vehicle Retailer

Please visit: [vauxhall/vans](http://vauxhall/vans)

Join us online:



**PROUD SPONSOR OF OUR  
NATIONAL FOOTBALL TEAMS**



Some feature descriptions in this brochure may refer to, and some illustrations may show, optional equipment not included in the standard delivery. The information contained in this brochure was accurate at the time of going to print. We reserve the right to make changes in design and equipment. The colours printed in the brochure only approximate actual colours. Illustrated optional equipment is available at extra charge. Availability, technical features and equipment provided on our vehicles, can vary by model. For precise information on the equipment provided on our vehicles, please contact your local Vauxhall Retailer. As part of Vauxhall's policy of environmental care, this brochure is printed on paper manufactured using Elemental Chlorine Free pulps from specially farmed, sustainable timber resources.

# VAUXHALL

[vauxhall.co.uk/movano](http://vauxhall.co.uk/movano)

LT00151147 ©2017 Vauxhall Motors Limited

Published September 2017 Vauxhall Motors Limited