

VIVARO

2018 Models Edition 1



VAUXHALL

BE THE BUSINESS.

When you're choosing a commercial vehicle, you need the right tool for the job. So welcome to our range, which includes four award-winning models Corsavan, Combo, Vivaro and Movano – with over 300 variations for every kind of job, from panel

vans, chassis cabs, crew cabs and platform cabs to box vans, tippers, dropsides and passenger carriers. Even better, our reliable, fuel-efficient vehicles are supported by a dedicated network of retailers across the UK, giving you expert help

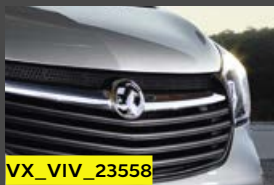


when and wherever you need it. And another thing – not only do we build more commercial vehicles than any other UK manufacturer (almost 74,000 built in the last year), we've won over 30 major awards since 2010, given by the toughest

judges in the industry. But what exactly does that mean for you? Well, it means you always know your van is made by the best in the industry, supported by professionals who care about doing a great job just as much as you.

Now isn't that the business?

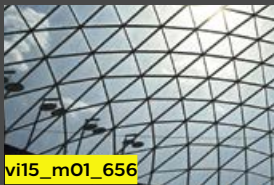




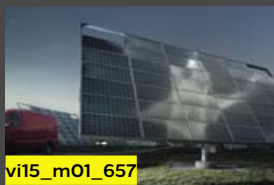
VX_VIV_23558



vi15_m01_655



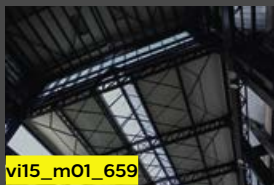
vi15_m01_656



vi15_m01_657



VX_VIV_21526



vi15_m01_659



vi15_m01_660



vi15_m01_661



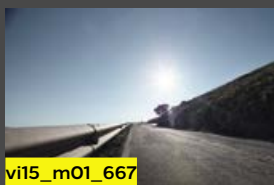
VX_VIV_23555



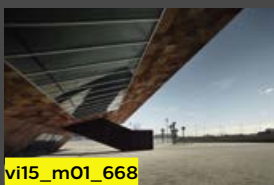
vi15_m01_664



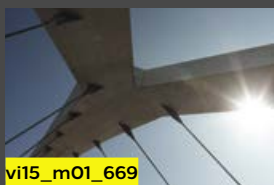
vi15_m01_666



vi15_m01_667



vi15_m01_668



vi15_m01_669



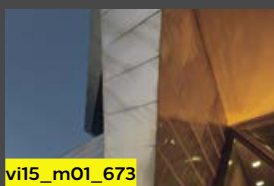
vi15_m01_670



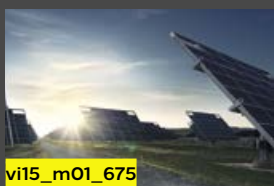
vi15_m01_671



VX_VIV_23547



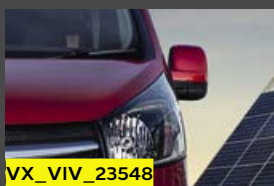
vi15_m01_673



vi15_m01_675



vi15_m01_676



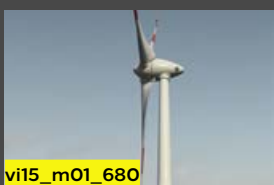
VX_VIV_23548



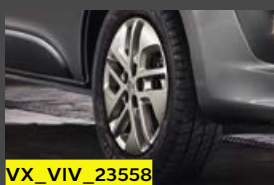
vi15_m01_678



vi15_m01_679



vi15_m01_680



VX_VIV_23558



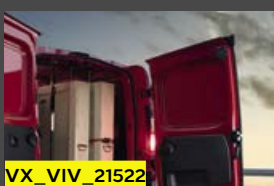
vi15_m01_682



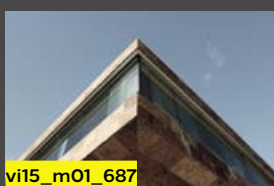
vi15_m01_683



vi15_m01_685



VX_VIV_21522



vi15_m01_687



vi15_m01_688



VIVARO. BUILT TO TAKE IT ALL.

Since 2001 van production at the Luton plant has exceeded one million units and the Vivaro name continues its illustrious predecessor by moving the game on – big time! With bold styling, ultra-efficient engines and in-cab connectivity that turns the working environment into a mobile office – Vivaro is truly built to take it all.

Siberia Challenge

Underlining its inbuilt reliability, durability and sheer dependability, the British-built Vivaro undertook a 12,000 mile road trip across Europe and Asia. Starting out from the Luton factory the journey – from Europe’s most westerly road to Asia’s most easterly – took in two continents and 17 countries on route to Siberia. Please see page 60 for the full story.



Some of the vehicles shown include options and accessories available at extra cost. And not all of the features, options or accessories described are available on every model. For model and equipment availability please refer to the latest Commercial Vehicle Range Price and Specification guide, available to download from vauxhall.co.uk for details. From time to time we may also offer alternative models such as Special Editions which are featured in separate literature or can be found on the Vauxhall website: vauxhall.co.uk/vans

CONTENTS

VIVARO

Design and engineering	8
Functionality	10
Interior design	12
Practicality	14
Efficiency	16
ecoTEC technologies	18
Engines and transmissions	20
Vivaro bodystyles	22
H1 Panel Van features	24
H2 Panel Van features	26
Doublecab features	28
Combi features	30
Platform Cab features	34
Cabin features	36
Infotainment	38
Safety and security	40
Vivaro model line-up	42
Options	48
Vehicle racking	50
Accessories	52
Colours and trims	54
British Superbike	
Championship	58
Siberia Challenge	60
Customer testimonials	62

BUILT TO BE VERSATILE.





Vivaro

BUILT TO PERFORM.

Vivaro looks tough because it is tough.

It was designed to improve performance in every way. In Panel Van, Doublecab, Combi and Platform Cab variants. And remember, it's built in Britain to the toughest standards so it's robust enough to take everything you can throw at it – and in it.



Designed to perform with a tough new look



Engineered to last



Built in Britain to the highest standards



Vivaro

BUILT TO WORK HARDER.

Well-equipped with a host of convenience features, Vivaro is built to work harder with intelligent cab design and is loaded with clever but practical ideas that help get the job done.



Practical ideas for maximum ease of use



Innovative cab design creates a virtual mobile office



Enhanced storage features assist your daily working routine





BUILT FOR THE LONG HAUL.

The Vivaro interior, a great place to be, all day long.

A well-designed driving environment means you sit comfortably, with everything you need right at your fingertips. Then there's an infotainment system, which means you're well connected and have all your entertainment at hand. On top of all that, the Vivaro is great to drive too.



Enhanced cab design for total comfort and control



Great place to be, great to drive however long the journey



Stay in touch with high levels of infotainment and communication





BUILT TO BE MORE FLEXIBLE.

The efficient Vivaro doesn't only strike the perfect balance between performance and running costs. It also takes a more flexible approach to load carrying.

Combining a spacious cargo area volume and superb payload capacity with two wheelbase options, two roof heights and the availability of the FlexCargo bulkhead option, the Vivaro panel van can carry even challenging loads with ease.



FlexCargo bulkhead available for loads of up to 4150mm in length



Loadspace dimensions enable L1 models to hold 8ft x 4ft sheets



Payload capacity up to 1265kg*

*For an exact definition, please refer to the Glossary of Terms section within the Commercial Vehicle Range Price and Specification guide, available to download from vauxhall.co.uk





BUILT TO TAKE YOU FURTHER.

The robust Vivaro isn't just more efficient. Panel Van, Doublecab or Combi, it makes your whole business more efficient.

With its superb range of flexible and efficient turbo-diesel engines and our innovative ECO mode system, this is an altogether more cost-effective Vivaro with smooth power delivery allied to impressive economy and reassuringly low CO₂ emissions.



Impressive fuel economy of up to 50.4mpg* (combined figure)



CO₂ emissions as low as 145g/km*



Turbo diesel engines deliver up to 145PS and 340Nm

*Combi models. For details of Vivaro Panel Van and Doublecab models please refer to the technical data within the Commercial Vehicle Range Price and Specification guide, available to download from vauxhall.co.uk





Vivaro

BIG STEPS. SMALL FOOTPRINT.

Vivaro maintains Vauxhall's commitment to reducing the impact of its vehicles, both in terms of operating efficiency and the effect that manufacturing has on the wider environment.

ecoTEC technology

- Help reduce fuel consumption to cut operating costs
- Achieve higher mileage with a lower carbon footprint

ECO mode

- Optimises key system settings
- Prompts more efficient driving

Start/Stop

- Saves fuel and reduces emissions
- Cuts/restarts the engine when appropriate

Brake energy regeneration

- Re-uses energy recovered from vehicle braking
- Helps reduce overall fuel consumption





Vivaro

ENGINES.

Delivering more power combined with lower emissions and impressive fuel economy whatever model you choose, Vivaro's smaller displacement – but no less efficient – Turbo and BiTurbo diesel engines deliver the perfect mix of day-to-day performance and competitive fuel consumption. At the same time, our latest ECO system technology – allied to our proven Start/Stop functionality – ensures operating costs are held firmly in check.

BiTurbo engines

- Frugal, sequential twin-turbo system
- Lag-free acceleration at any speed
- 1.6 BiTurbo 125PS/145PS available with Start/Stop technology

Quiet, clean and efficient diesel engines

- Variable-displacement oil pumps reduce fuel consumption
- Low-maintenance chain-driven camshafts
- Multi-point fuel injection for low emissions and high performance
- Optimised thermal management increases efficiency

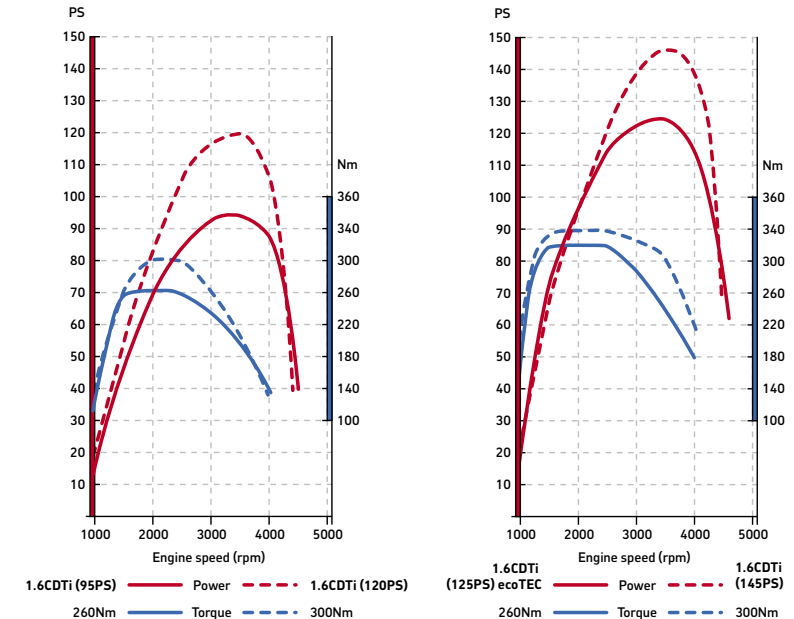
*Combi models. For details of Vivaro Panel Van and Doublecab models please refer to the technical data within the Commercial Vehicle Range Price and Specification guide, available to download from vauxhall.co.uk



VX_VIV_21588

Award-winning technology

With its superb range of flexible and highly economical turbo-diesel engines, this is an altogether more cost-effective Vivaro, with engines delivering up to 145PS and 340Nm, CO₂ emissions as low as 145g/km* and impressive fuel economy of up to 50.4mpg* (combined figure). Indeed, its sophisticated 1.6 litre BiTurbo CDTi with sequential turbocharging and twin-cooler system has already been presented with the prestigious Innovation Award in the Van Fleet World Honours 2014.



ENGINE DATA*

	Maximum power PS (kW) @ rpm	Maximum torque Nm (lb.ft.) @ rpm	Fuel economy mpg (litres/100km)#			CO ₂ emissions (g/km)
			Urban driving	Extra-urban driving	Combined figure	
Panel Van and Doublecab						
1.6CDTi (95PS)	95 (70) @ 3500	260 (192) @ 1500	35.3 (8.0) – 36.2 (7.8)	47.0 (5.9) – 48.7 (5.8)	42.1 (6.7) – 43.4 (6.5)	174 – 170
1.6CDTi (95PS) Start/Stop	95 (70) @ 3500	260 (192) @ 1500	38.7 (7.3) – 39.2 (7.2)	48.7 (5.8) – 50.4 (5.6)	44.8 (6.3) – 46.3 (6.1)	164 – 160
1.6CDTi (120PS)	120 (89) @ 3500	300 (221) @ 1750	35.3 (8.0) – 36.2 (7.8)	47.0 (6.0) – 48.7 (5.8)	42.1 (6.7) – 43.4 (6.5)	174 – 170
1.6CDTi BiTurbo (125PS) Start/Stop ecoTEC	125 (92) @ 3500	320 (236) @ 1500	38.2 (7.4) – 40.9 (6.9)	42.8 (6.6) – 51.4 (5.5)	40.9 (6.9) – 47.0 (6.0)	178 – 155
1.6CDTi BiTurbo (145PS) Start/Stop	145 (107) @ 3500	340 (251) @ 1750	39.2 (7.2) – 39.8 (7.1)	48.7 (5.8) – 50.4 (5.6)	44.8 (6.3) – 46.3 (6.1)	164 – 160
Combi						
1.6CDTi (95PS) Start/Stop	95 (70) @ 3500	260 (192) @ 1500	41.5 (6.8)	52.3 (5.4)	47.1 (6.0)	155
1.6CDTi BiTurbo (125PS) Start/Stop ecoTEC	125 (92) @ 3500	320 (236) @ 1500	44.1 (6.4)	55.4 (5.1)	50.4 (5.6)	145

*For more detailed technical data, please refer to the Commercial Vehicle Range Price and Specification guide, available to download from vauxhall.co.uk

#Fuel consumption information is official government environmental data, tested in accordance with the relevant EU directive. Official EU-regulated test data is provided for comparison purposes and actual performance will depend on driving style, road conditions and other non-technical factors.



VX_VIV_23551

VERSATILITY IN ACTION.

With a choice of four bodystyles,
Vivaro offers an option to suit every
van operator.

The Vivaro is available in the following variants:

- Panel Van – two lengths, two heights
- Doublecab – two lengths
- Combi – two lengths
- Platform Cab



WEIGHTS AND LOADSPACE DIMENSIONS*

Vivaro body versions	Maximum GVW (kg)	Maximum payload (kg)	Maximum loadspace volumes (VDA method)	Maximum load floor lengths (mm)	Maximum load area width (mm)	Width between wheel arches (mm)	Maximum load area heights (mm)	Maximum rear door aperture heights (mm)	Rear door aperture width at floor (mm)	Loading height (unladen) (mm)	Sliding side-access door aperture height (mm)	Sliding side-access door aperture width (mm)
Panel Van												
L1 H1 2700	2820	1060 – 1062	5.2	2537	1662	1268	1387	1320	1391	552	1284	1030
L1 H1 2900	2980	1220 – 1222	5.2	2537	1662	1268	1387	1320	1391	552	1284	1030
L1 H2 2900	2980	1143	7.2	2537	1662	1268	1898	1820	1391	552	1284	1030
L2 H1 2900	3040	1265	6.0	2937	1662	1268	1387	1320	1391	552	1284	1030
L2 H2 2900	3070	1185	8.6	2937	1662	1268	1898	1820	1391	552	1284	1030
Doublecab												
L1 H1 2900	2844	974	3.2	2023	1662	1268	1387	1320	1391	552	1284	1030
L2 H1 2900	2950	1025	4.0	2423	1662	1268	1387	1320	1391	552	1284	1030
Combi												
L1 H1 2900	2970	1068 – 1148	1.0–3.2	736	1662	1268	1387	1320	1391	552	1284	1030
L2 H1 2900	3020	1157	1.8–4.0	1136	1662	1268	1387	1320	1391	552	1284	1030

*For details of weights and loadspace dimensions please refer to the technical data and Glossary of Terms sections within the Commercial Vehicle Range Price and Specification guide, available to download from vauxhall.co.uk

VARIANTS

Panel Van

VX_VIV_21593



L1 H1

VX_VIV_21594



L1 H2

VX_VIV_21595



L2 H1

VX_VIV_21596



L2 H2

Doublecab

VX_VIV_21597



L1 H1

VX_VIV_21598



L2 H1

Combi

VX_VIV_21599



L1 H1

VX_VIV_21600



L2 H1

Platform Cab

VX_VIV_21601



L2 H1



H1 PANEL VAN.

Versatility and flexibility in equal measure. Whatever you need, the Vivaro has it all.

Access and loadspace features include:

- Choice of two wheelbases
- Easy-access, 1m-wide nearside sliding side-loading door
- Full-height steel bulkhead
- Unglazed rear doors (90/165° opening)
- Illuminated load area
- 12-volt electrical accessory socket in load area
- Side and rear doors take a Euro pallet with ease
- Up to 6.0cu.m (211.9cu.ft.) max. loadspace volume
- 2537mm or 2937mm standard load floor lengths
- FlexCargo bulkhead extends loadspace length to up to 4150mm (standard on Sportive models only)
- Floor-mounted, load-securing eyes
- Payload capacity up to 1265kg*

*For an exact definition, please refer to the Glossary of Terms section within the Commercial Vehicle Range Price and Specification guide, available to download from vauxhall.co.uk

Not all features and options are available on every model. Please refer to the equipment section within the Commercial Vehicle Range Price and Specification guide, available to download from vauxhall.co.uk



1. Euro-pallet friendly. Specifically designed to carry Euro-pallets, Vivaro can accommodate up to three pallets, even on L1 models. Assisted by easy side access, the generous 1.2m width between the rear wheel arches also makes the new van suitable for carrying wide loads such as 8ft. x 4ft. plywood sheets.

2. Flexible loadspace. Standard on Sportive and optional on Panel Van models, the FlexCargo bulkhead allows loads of up to 4150mm in length to be accommodated with ease.



Vivaro

H2 PANEL VAN.

More loadspace for maximum versatility makes light work of bulky loads.

Access and loadspace features include:

- Versatile 1898mm maximum load height
- Choice of two wheelbases
- Easy-access, 1m-wide nearside sliding side-loading door
- Full-height steel bulkhead
- Unglazed rear doors (90/165° opening)
- Illuminated load area
- 12-volt electrical accessory socket in load area
- Side and rear doors take a Euro pallet with ease
- Up to 8.6cu.m (303.7cu.ft.) max. loadspace volume
- 2537mm or 2937mm standard load floor lengths
- FlexCargo bulkhead option extends loadspace length to up to 4150mm
- Floor-mounted, load-securing eyes
- Payload capacity up to 1185kg*

*For an exact definition, please refer to the Glossary of Terms section within the Commercial Vehicle Range Price and Specification guide, available to download from vauxhall.co.uk

Not all features and options are available on every model. Please refer to the equipment section within the Commercial Vehicle Range Price and Specification guide, available to download from vauxhall.co.uk



1. Full standing height. Extra height, easy access and plenty of space means the Vivaro H2 versions not only carry larger loads, they also make the perfect mobile workshop.



DOUBLECAB.

The Doublecab matches practical and comfortable crew transport to excellent loadspace and payload.

Access and loadspace features include:

- Choice of two wheelbases
- Twin sliding side-access doors with fixed windows
- Up to 4.0cu.m (141.3cu.ft.) max. loadspace volume
- High-strength ABS plastic bulkhead with window
- Half-height sidewall trim with storage pocket
- Three-passenger rear bench seat
- Bench seat with additional storage, armrests, ISOFIX child seat restraint system on outer seats and 12-volt electrical accessory socket (Sportive models only)
- Unglazed rear doors (90/165° opening)
- Glazed rear doors or glazed tailgate (optional)
- Heated rear window and wash/wipe (optional)
- Rear doors take a Euro pallet with ease
- 1340mm or 1740mm standard load floor lengths
- Additional loadspace under rear bulkhead extends loadspace length to up to 2423mm (L2 models)
- Floor-mounted load restraint lashing eyes
- Payload up to 1025kg*

*For an exact definition, please refer to the Glossary of Terms section within the Commercial Vehicle Range Price and Specification guide, available to download from vauxhall.co.uk

Not all features and options are available on every model. Please refer to the equipment section within the Commercial Vehicle Range Price and Specification guide, available to download from vauxhall.co.uk



1. Twin sliding side-access doors. The extra-wide door opening ensures easy passenger access while the individually-contoured rear bench seat accommodates up to three passengers in complete comfort with excellent leg room and raked rear seat backs.

2. and 3. Loads of loadspace. There's instant access to underseat storage in the passenger section, plus up to 4.0cu.m of usable loadspace.



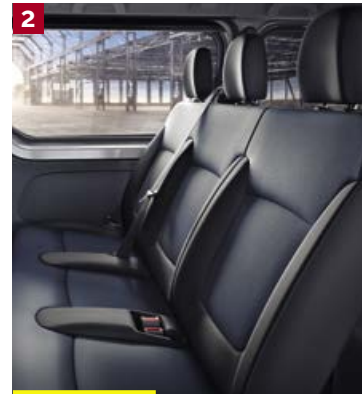
COMBI.

The Combi provides generous accommodation allied to generous luggage space and is ideally suited to hotel and airport shuttle bus work and private-hire companies.

Combi standard features include:

- Nine-seat configuration with choice of two wheelbases
- Twin sliding side-access doors with fixed windows
- Three-passenger second and third-row bench seats
- 60/40 split-folding seat back for second-row bench seat
- Fold and tumble facility for third-row bench seat
- Removable second and third-row bench seats
- Inertia-reel lap and diagonal seatbelts for all seats
- Glazed tailgate with heated rear window and wash/wipe facility
- Rubber floor covering
- Half-height sidewall trim
- Load restraint lashing eyes for load area
- Appearance Pack option available (see page 49 for full details).

Not all features and options are available on every model. Please refer to the equipment section within the Commercial Vehicle Range Price and Specification guide, available to download from vauxhall.co.uk



1. Second-row split-folding rear seat. The easy-to-operate split-folding seat back allows convenient access for third-row passengers.

2. Nine-seater comfort. Combi offers comfortable seating for up to eight passengers.

3. and 4. Additional comfort. Optional rear air conditioning controls and a separate rear heater are also available for Combi.

MORE VERSATILE.



VX_VIV_21530

Available in a choice of short and long wheelbase models, Combi delivers the perfect blend of passenger carrying ability and load carrying potential. The dynamic new look

and improved interior can be further enhanced with one of the optional Appearance Packs available at extra cost, see page 49.



1. Transport for up to eight passengers. With maximum versatility assured through its mix of foldable/removable seating configurations, Combi provides transport for up to eight passengers, making it ideal for transporting work crew. Generously proportioned rear sliding doors make Combi easy to enter and exit, heightening the model's potential as a courtesy vehicle.

2. and 3. Rear seat combinations. With its tumble and fold or removable third-row seating, Combi can accommodate the required mix of passengers and luggage with ease.

4. Versatile and adaptable. With the second- and third-row seats removed, the vehicle can even double as a conventional Panel Van, should the need arise.





PLATFORM CAB.

The Vivaro Platform Cab provides the perfect base for specialist conversions that require low floor and walk-through access from the cab.

Key features include:

- Maximum GVW of 3030kg
- Versatile long wheelbase of 3498mm
- Comprehensive comfort and safety equipment
- Optional extended-length wiring loom
- Payload up to 1474kg*

*For an exact definition, please refer to the Glossary of Terms section within the Commercial Vehicle Range Price and Specification guide, available to download from vauxhall.co.uk

WELCOME TO YOUR OFFICE.

Vivaro's interior reflects Vauxhall's understanding of the challenges faced by van operators in their daily working lives. Comfort and control levels are optimised right across the cab, along with enhanced infotainment connectivity. Premium quality materials are used throughout for improved appearance, durability and owner appeal. Finally we've improved the interior ergonomics across the van, further enhancing the interface between driver and vehicle.

Fold-flat centre front passenger seat. The centre section of the fold-flat front passenger seat features a handy clipboard holder which can also be removed when necessary, leaving a handy, solid and flat surface. The unit also flips forward to create a lidded work surface, with hidden, secure storage for work paraphernalia – eg. maps, handbooks, general documentation – along with an additional drinks holder. The folding process takes just seconds. Standard on Sportive and Limited Edition, optional on standard Panel Van models.





VX_VIV_23368



VX_VIV_21871



VX_VIV_21540



VX_VIV_21869

1. Aux-in and USB. Most audio units feature integrated aux-in and USB ports within the fascia, enabling drivers to connect their mobile devices and access a wide range of multi-media files. An additional USB port is fitted in the upper fascia to enable the charging of mobile phones and MP3 devices (not available with NAVI 80 IntelliLink).

2. The Vivaro fascia features nine storage spaces, providing more than 24 litres of storage volume in total. Highlights include a large, usable glovebox, upper fascia storage, three drinks holders and a handy driver's storage pocket.

3. The clipboard itself can be securely fastened in two positions, easily visible to either the driver or passenger. It's suitable for documents up to A4 in size, including contracts, invoices and general day-to-day paperwork.

4. Generous door pockets provide useful stowage space for maps, documents and other essential workday items.

ENHANCED CONNECTIVITY.

With enhanced infotainment connectivity, Vivaro is, quite simply, one of the best-connected vans on the market!

Vivaro models offer:

- Bluetooth® connectivity and USB for smart phones and MP3 players
- Digital radio
- Steering column-mounted audio and telephone controls
- Aux-in socket
- Optional satellite navigation systems

1. NAVI 50 IntelliLink. Specifically tailored to the cab environment, the NAVI 50 IntelliLink unit provides drivers with an accurate and affordable navigation option with map coverage for Western or Eastern Europe with Traffic Message Channel (TMC). Key features include a 7-inch colour touchscreen, Bluetooth® connectivity, steering wheel mounted controls and MP3/WMA playback from USB and Bluetooth® audio streaming. When connected to an Apple iPhone Navi 50 also supports Siri voice control and displays information about the music you are playing.





VX_VIV_21544



VX_VIV_21545



VX_VIV_21591



VX_VIV_21592



VX_VIV_23372

2. NAVI 80 IntelliLink. The intuitive, top-of-the-range system with 3-D viewing, integrated voice control, USB video player/photo reader and TomTom LIVE services till 2020 without charge for real-time traffic information. The 7-inch display also shows the view for the optional rear-view camera.

3. R 16 BT USB. The entry-level system offers exceptional functionality featuring Bluetooth® and USB connectivity as well as digital radio as standard.

4. CD 18 BT USB. The CD 18 BT USB features the same specifications as the R 16 BT USB but adds a CD player and is configured in the double-DIN format.

5. Tablet docking station. Compatible with the R 16 BT USB, this facility allows tablets between 4.8 and 10.6 inches to be securely fixed in place for ease of use.

6. Smartphone docking station. This feature allows smartphones of up to a 4.7-inch screen size to be securely mounted within easy sight and perfect reach. Power is taken from the upper USB socket on the fascia.

SAFETY AT WORK.



Safety and security in the workplace and out on the road are key concerns for any business and Vivaro is no exception. While many of its advanced active and passive protection features will be reassuringly familiar to Vauxhall drivers, the Vivaro is more safe and secure than ever. Standard safety

equipment includes the very latest Electronic Stability Programme (ESP-plus) with integrated traction control, roll-over mitigation and hill-start assist, anti-lock braking system with electronic brakeforce distribution and emergency brake assist.



- 1. Optional rear-view camera.** Activated automatically when reverse gear is selected, the system provides clear rearward vision by displaying in the rear-view mirror.
- 2. Wide-angle blind spot mirror.** Located in the passenger sunvisor, it provides additional visibility.
- 3. Selective door locking.** Allows the cab area to be unlocked independently of the load compartment, and vice versa, reducing the opportunities for theft. Standard on Sportive, optional on other models.
- 4. Keyless entry and start.** Operated via a key card that slots into the fascia. Doors can be opened remotely via the key card and the engine is stopped and started via a button on the centre console. Optional on Start/Stop models.
- 5. ESP-plus with integrated roll-over mitigation.** This system senses when the vehicle departs from the driver's chosen path. The roll-over mitigation feature constantly monitors the vehicle's behaviour and intervenes when it threatens to lean to one side, to help stabilise the vehicle.

VIVARO.

Vivaro models open their account with a generous level of equipment that puts many rival models to shame.

Standard features include:

- Electronic stability programme with traction control
- Electrically operated front windows
- Electrically adjustable/heated door mirrors
- Remote control central deadlocking
- ABS with electronic brakeforce distribution
- ECO mode
- Electronic engine deadlock immobiliser
- Full-height steel bulkhead (Panel Van only)
- Wide-angle blind spot mirror
- Six-way adjustable driver's seat with height adjustable armrest and lumbar adjustment
- Steering column adjustable for reach and rake
- Multi-function trip computer
- R 16 BT USB digital radio/AM/FM stereo radio
- Bluetooth® connectivity – USB and aux-in facility
- Steering wheel mounted audio and phone controls
- Illuminated glovebox
- Facia-mounted drinks holders
- Blue Tricess cloth seat trim
- Driver's airbag
- Dual front passengers' bench seat
- 16-inch wheels



VX_VIV_21570

MODEL AVAILABILITY	L1 H1		L1 H2		L2 H1		L2 H2	
	2700	2900	2700	2900	2700	2900	2700	2900
Panel Van	•	•	–	•	–	•	–	•
Doublecab	–	•	–	–	–	•	–	–
Combi	–	•	–	–	–	•	–	–
Platform Cab	–	–	–	–	–	•	–	–



VX_VIV_27481

L1 H1 2700 model illustrated features Flame Red brilliant paint, optional at extra cost.

VIVARO SPORTIVE.

Sportive models build on the generous specification of the standard van with many added features, enhanced style accents and even greater levels of comfort.

Additional features over and above standard models:

- Body-colour front and rear bumpers, side-protection mouldings, exterior mirror housings and rear light cluster surrounds
- Air conditioning with air recirculation (cab only)
- FlexCargo bulkhead
- Dual passenger bench seat with fold-flat centre section featuring storage tray and dual position clipboard facility (not Doublecab models)
- Cruise control with speed limiter
- Selective door locking
- Three-button key
- Rear parking distance sensors
- CD 18 BT USB CD/MP3 CD player/digital radio/stereo radio
- Black Connect embossed cloth seat trim
- Leather-covered steering wheel and gear knob
- LED daytime running lights
- Front fog lights with chrome surround
- Full-diameter wheel trims
- Brilliant paint/two-coat metallic paint



VX_VIV_21543

MODEL AVAILABILITY	L1 H1		L2 H1	
	2700	2900	2700	2900
Panel Van	•	•	–	•
Doublecab	–	•	–	•

The air conditioning in vehicles with N1, N2 or M2 type approval relies upon fluorinated greenhouse gases (R134a) for its functioning. The front system contains a quantity of overall 580g of R 134a, which corresponds to a CO₂ equivalent of 0.83 tons. The front and rear system in versions with up to 9-seats contains a quantity of overall 1,100g of R 134a, which corresponds to a CO₂ equivalent of 1.57 tons. The front and rear system in versions with more than 16-seats contains a quantity of overall 1,700g of R 134a, which corresponds to a CO₂ equivalent of 2.43 tons. The global warming potential amounts to 1430. Information acc. to R (EU) No. 517/2014.



VX_VIV_27539

L1 H1 Sportive 2900 model illustrated features Sight and Light Pack, optional at extra cost. Flame Red brilliant paint is a no-cost option.

VIVARO LIMITED EDITION NAV.

The ultimate Vivaro designed to look good and work hard with a standard features list that's the business in more ways than one.

Additional features over and above Sportive models:

- Automatic lighting control
- Rain-sensitive windscreen wipers
- 17-inch 5-spoke alloy wheels
- Unique vehicle graphics
- NAVI 50 IntelliLink infotainment system with the following features:
 - Satellite navigation
 - 7-inch colour touchscreen
 - Digital radio and AM/FM stereo radio with 12-station presets
 - Aux-in socket and USB connection
 - Bluetooth® connectivity
- FLEXDOCK – smartphone docking station



MODEL AVAILABILITY	L1 H1		L2 H1	
	2700	2900	2700	2900
Panel Van	•	–	–	•
Doublecab	–	•	–	•



VX_VIV_27478

VX_VIV_27479

L1 H1 Limited Edition NAV 2900 Doublecab (left) and L1 H1 Limited Edition NAV 2700 Panel Van (right) models illustrated.

OPTIONS.

Vivaro offers a range of options and option packs to suit every need. For more information please speak to your Vauxhall Commercial Vehicle retailer.

Safety and security

- Front passengers' airbag with deactivation switch

Interior

- Single front passenger's seat adjustable for height, reach and rake with armrest and lumbar adjustment
- Air conditioning with air recirculation facility (cab and rear passenger area), with auxiliary heater – Combi models

Exterior

- Front fog lights
- Rear parking distance sensors
- Rear parking distance sensors with rear-view camera
- Tow bar with 13-pin electrics (includes trailer stability programme). Does not suit trailers with LED lights*
- Dark-tinted rear windows

Load area

- Vertical luggage restraint – half-height solid with black upper mesh – Combi models
- Luggage cover – Combi models
- Offside sliding side-access door
- Nearside and offside glazed sliding side-access doors
- Nearside and offside glazed sliding side-access doors with sliding windows

*For trailers with LED lights use Genuine Vauxhall Accessory tow bars which also include trailer stability programme.

Not all features and options are available on every model. Please refer to the equipment section within the Commercial Vehicle Range Price and Specification guide, available to download from vauxhall.co.uk



VX_VIV_23558



VX_VIV_26267



VX_VIV_23621



VX_VIV_26189

1. Appearance Pack. LED daytime running lights, front fog lights, full-diameter wheel trims, body-colour front bumper, body-colour rear quarter bumpers, Black Connect cloth seat trim, leather-covered steering wheel and gear knob. Alloy wheels illustrated are also optional at extra cost.

2. and 3. Rear door options:

- Glazed rear doors, 90/165° opening
- Unglazed rear doors, 270° opening (L2 H1 models only)
- Glazed rear doors, 270° opening (L2 H1 models only)
- Glazed tailgate with wash/wipe facility (not available on H2 models) Glazed rear doors mandate glazed bulkhead.

4. Load area protection. A range of options are available to help protect loads and safeguard the interior:

- Rubber-coated reinforced wooden load floor covering
- Resin-coated 9mm laminate plywood load floor covering
- Half-height plastic load lining panels
- Full-height lightweight 4.7mm plastic honeycomb load lining panels and wheel arch projection
- Resin-coated laminate plywood wheel arch protection.

5. Climate and Cruise Pack. Air conditioning with air recirculation (cab only), CD 18 BT USB, cruise control.

6. Optional rear-view camera. Provides clear rearward vision by displaying in the rear-view mirror.

7. Bulkheads. Vivaro can be specified with a full steel or glazed bulkhead.



VX_VIV_21545



VX_VIV_23369



VX_VIV_21881

PRACTICALITY OFF THE SHELF.

An organised workspace is an essential foundation for a job well done. Give your Vivaro a flying start by ordering our factory-fitted workspace solutions from Bott.

Available for L1 and L2 Vivaro models, Bott Vario is an advanced storage system which allows you to create and organise an efficient workspace fit for all your business needs.

Turn your Vivaro into a workshop on wheels

- Choice of two flexible systems
- Efficient solution for maximum storage capabilities
- Intelligent design with reduced weight to maximise payload
- High quality finish and installation
- Uncompromising robustness and stability, designed for maximum longevity
- Safe storage for maximum peace of mind – crash tested in accordance with ECE R44



Bott Vario is a supplementary, reversible enhancement supplied and supported by Bott Limited. Vauxhall Motors Limited UK (T/A Vauxhall Motors) does not give any warranty for any of the package parts and is not liable for their quality. Specific spare parts can be ordered from Bott. The racking system reduces the maximum payload of the base vehicle.



VX_VIV_25710

The Pack One system illustrated also features full-height 4.7mm plastic honeycomb load lining panels, optional at extra cost.



VX_VIV_25709

PACK ONE

The Pack One racking solution offers secure shelf and floor storage complete with a non-slip flooring to complete the specification.

1. Offside unit – 1525W x 320D x 1000H

Module specification:

- End frames with corner protection
- 2 x low front shelf with anti-slip mat
- Base compartment with lashing rail and ratchet strap
- Resin-coated, non-slip moisture repellent 9mm birch multiplex flooring

2. Nearside unit – 1025W x 420D x 900H

Module specification:

- End frames with corner protection
- 1 x low front shelf with anti-slip mat and divider
- 1 x low front shelf
- Base compartment with lashing rail and ratchet strap
- Resin-coated, non-slip moisture repellent 9mm birch multiplex flooring



VX_VIV_25711



VX_VIV_25708



VX_VIV_25704



VX_VIV_25701



VX_VIV_25703

PACK TWO

With efficient compartments that can be configured to your individual needs, and full-height lining, Pack Two offers secure storage and quick access to tools and materials.

3. Offside unit – 2050W x 320D x 1000H Module specification:

- End frames with corner protection
- 1 x 2000mm wide low front shelf with 2 dividers
- 1 x low front shelf with 4x Bott storage boxes
- 1 x low front shelf with 7x Bott storage boxes
- 1 x low front shelf with anti-slip mat
- 1 x low front shelf with anti-slip mat and divider
- Base compartment with lashing rail and ratchet strap **6**
- Full-height white plastic load lining
- Resin-coated, non-slip moisture repellent 9mm birch multiplex flooring **7**

4. Nearside unit – 1025W x 420D x 900H Module specification:

- End frames with corner protection
- 1 x low front shelf with anti-slip mat
- 1 x low front shelf with 7x Bott storage boxes
- A4 aluminium document pocket **5**
- Base compartment with lashing rail and ratchet strap **6**
- Full-height white plastic load lining
- Resin-coated, non-slip moisture repellent 9mm birch multiplex flooring **7**

ACCESSORIES.

Vauxhall options and accessories are all about choice – selecting your Vivaro then personalising it to suit the way you work.

There's a comprehensive range of Genuine Vauxhall Accessories all designed and manufactured to the same exacting standards as the van itself.

We've only shown a selection of what's available here; for the complete range please contact your local retailer for further information.

1. Roof carrier system. The base roof carrier system can be fitted with a steel roof rack complete with loading roller to help manoeuvre and secure goods on the roof easily and safely. A steel loading ladder and roof walkway are also available.



VX_VIV_26268



VX_VIV_21585



VX_VIV_21586



VX_VIV_21928



VX_VIV_23616



VX_VIV_22280



VX_VIV_22281

2. Base carrier. The sure-fire way to fasten long or awkward loads to the roof. The base carrier works best with a roof rack, ladder clamp, loading bars and load stop.

3. Rear splash guards. The essential accessory designed to protect the lower bodywork against stone chips, grit and other road material.

4. Tow bars. Available in a choice of fixed or detachable, ball, jaw or pin design, Vivaro's tow bars are available for a trailer load of up to 2000kg.

5. Load area protection. Full-height plywood load lining and wheel arch protection help safeguard the loadspace area.

6. Interior roof rack. Utilises the normally unused space under the vehicle roof to enable the loading of bulky items safely inside the load area.

7. Load area entry guard. Covers and protects the rear bumper when loading and unloading.

EXTERIOR COLOURS.

Stylish hard-working vans deserve a striking paint scheme to match.

SOLID



Glacier White



Ink Blue*

BRILLIANT**



Flame Red



Spring Green



Iron Grey

Due to the limitations of the printing process, the colours reproduced may vary from the actual colour. As a result they should be used as a guide only. Please note: Certain alternative colours are available for special order on Vivaro. Restrictions apply so please consult your Commercial Vehicle retailer for more details.

TWO-COAT METALLIC**



Panorama Blue



Midnight Black



Cassiopeia Silver



Copper Brown



Jasper Brown



Platinum Silver

*Not available on Sportive or Limited Edition models or in conjunction with Appearance Packs.

**Optional at extra cost. No-cost option on Sportive and Limited Edition.

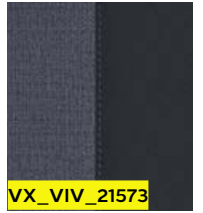
INTERIOR TRIMS.

A smart van interior says a lot about your business.

BLUE TRICISS - STANDARD MODELS



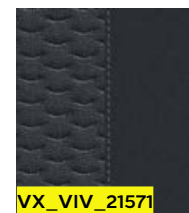
VX_VIV_21570



VX_VIV_21573

Blue Triciss
cloth seat insert.

BLACK CONNECT - SPORTIVE/LIMITED EDITION NAV MODELS*



Black Connect embossed cloth seat insert.

*Also available as part of Appearance Pack 2 on Combi models.

BRITISH SUPERBIKE CHAMPIONSHIP.

To celebrate Vauxhall's sponsorship of the 2017 MCE British Superbike Championship two new concept vans have been specially-designed. The Vivaro and Movano Race Van Concepts will be displayed throughout the 2017 BSB season.

Vivaro Race Van Concept

The Vivaro Race Van Concept is designed to function as a mobile workshop supporting any number of trade professionals. On a non-working day it can be easily-transformed to support track-day or even off-road motorcycling.

The cargo layout is well-considered and flexible with the offside featuring a combination of fixed racking and removable lightweight mobile workstations. The nearside features a folding shelf system to store additional kit.

There are also a number of built-in comfort features including a fold-down bench seat on the bulkhead, microwave, refrigerator and a 32-inch Smart TV.

Movano Race Van Concept

The Movano Race Van Concept was designed with the purpose of providing support and transport for the smaller motorcycle racing teams.

The cargo layout on the Movano features a permanent approach with the offside featuring a combination of fixed workbench and racking. The toolboxes within the workbench can also be removed. The nearside features the same folding shelf system. In addition, the Movano Race Van Concept features a retractable awning that provides an enclosed all-weather workspace adjacent to the van. A number of built-in comfort features include a fold-down bench seat on the bulkhead, microwave, refrigerator, wash basin and a 40-inch Smart TV.





SIBERIA CHALLENGE.

Underlining the model's inherent reliability and durability, the Vivaro completed a 12,000 mile road trip across Europe and Asia – the longest possible journey overland without crossing an ocean. The journey began at the Luton factory where the new model is produced.

The route tested the team across a challenging mix of high-speed autobahns, broken tarmac, tracks across Mongolia's vast Steppe and 2,000 miles of graded dirt in Siberia – a massive achievement for a standard front-wheel drive van. It included a stretch of the notorious M56 Kolyma Highway through the Russian Far East – often referred to as 'The Road of Bones'. The expedition, designed as a fundraiser for the charity Help for Heroes, saw a team including ex-soldiers, a mechanic and a medic embark on the journey of a lifetime in three Vivaro vans.

The route from Europe's most westerly road to Asia's most Easterly took in two continents and 17 countries. Final destination was the remote city of Magadan in Siberia. Needless to say, Vivaro passed the test with flying colours.

For more details about the Vivaro's incredible trek, log on to vauxhall.co.uk/siberiachallenge





“This was the opportunity of a lifetime for the ex-servicemen and women to take part in a memorable two-month journey to help them re-adjust to civilian life. It was also the perfect opportunity to demonstrate that the Vivaro is built to take it all.”

Steve Bryant,
Brand Manager
Vauxhall Commercial Vehicles



VAUXHALL COMMERCIAL VEHICLES. BE THE BUSINESS.

Whatever your load, Vauxhall Commercial Vehicles are designed to help you deliver a top quality job. Our award-winning line-up can actively enhance the operating



**Jonathan Mounsey,
Managing Director of
JD Mounsey Ltd, said...**

'The plan is to become a 100 per cent Vauxhall Fleet. There's no better combination of residual value, low running costs and reliability. They do the job.'



efficiency of your business by delivering outstanding load-carrying potential, low running costs and day-long driver comfort. Whichever Vauxhall Commercial Vehicle you choose, you can also rest assured that Vauxhall's nationwide network of retailers will go the extra mile to meet all your servicing and

maintenance needs. But why take our word for it? Vauxhall's commitment to keeping your business moving is recognised by van operators of all sizes across the length and breadth of the country...



Mike Sinclair, Senior Property Partner, Aberdeen Considine said...

'Our fleet of 23 Corsavan Sportives is a reflection on our business, reinforcing our professional image. Not only that, we've found them economical, reliable and fun to drive.'



Richard Fox, Managing Director of ITE Projects said...

'We rely totally on our vehicles to ensure we are available 24/7 to service our customers' critical requirements. The Combo van is proving to be as reliable as we are.'



Russell Lelliot, Managing Director, RSL Transport said...

'We've been running Movanos for years. Our two new Movanos save around 4mpg when full, compared to the old models. Which over almost 3,000 miles per week per van, is a big saving!'

Trust Vauxhall

Fleet Customer Services

Our dedicated support services for fleet managers include factory demonstrators and information on whole life costs, company car and van taxation and finance. For further information please call **0330 587 8222**.

For more information...

For a brochure on any Vauxhall model (up to a maximum of three per caller) or location of your nearest retailer, call **0345 600 1500**.

Alternatively, details can be found on our website at: vauxhall.co.uk/vans

To Find a Commercial Vehicle Retailer

Please visit: vauxhall/vans

Join us online:



**PROUD SPONSOR OF OUR
NATIONAL FOOTBALL TEAMS**



Some feature descriptions in this brochure may refer to, and some illustrations may show, optional equipment not included in the standard delivery. The information contained in this brochure was accurate at the time of going to print. We reserve the right to make changes in design and equipment. The colours printed in the brochure only approximate actual colours. Illustrated optional equipment is available at extra charge. Availability, technical features and equipment provided on our vehicles, can vary by model. For precise information on the equipment provided on our vehicles, please contact your local Vauxhall Retailer. As part of Vauxhall's policy of environmental care, this brochure is printed on paper manufactured using Elemental Chlorine Free pulps from specially farmed, sustainable timber resources.

VAUXHALL

vauxhall.co.uk/vivaro

LTO0151146 ©2017 Vauxhall Motors Limited

Published September 2017 Vauxhall Motors Limited